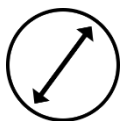


# *DRUM MOTOR HERKULES 80*



48 VDC



Ø80mm



770W

The drum motors of the HERKULES 80 product range contain very powerful and at the same time efficient synchronous motors, which are designed for the respective operating range according to the latest calculation methods. The synchronous motors guarantee a much higher efficiency than previously used asynchronous geared motors. The motors are combined with planetary gear units which are dimensioned for maximum compactness and power density.

---

**Technical data**

Designation		Description		
Nominal voltage*	VDC	48		
Power	W	210	440	770
Nominal current	A	6,0	11,6	19,5
Starting current	A	26,5	44,4	68,5

Ambient temperature**	°C	0 ... 40		
Outer diameter	mm	Ø80		
Wall thickness	mm	3,0		
Tube material		galvanized steel, stainless steel		
Tube***		cylindrical crowned tube coating		
Protection class		IP54		

\* 400 VAC on request.

\*\* Other ambient temperatures on request.

\*\*\* Dimensions and design can be customized.

## Versions

Power [W]	v [m/s]	M <sub>n</sub> [Nm]	M <sub>a</sub> [Nm]	F <sub>n</sub> [N]	F <sub>max</sub> [N]
<b>210</b>	0 ... 0,34	22,5	55,0	564	1375
	0 ... 0,48	16,1	55,0	403	1375
	0 ... 0,67	11,5	50,6	288	1265
	0 ... 0,84	9,2	40,5	230	1012
	0 ... 1,05	7,4	32,4	184	810
	0 ... 1,4	5,5	24,3	138	607
	0 ... 2,39	3,3	14,5	82	362
	0 ... 4,19	1,9	8,3	47	207

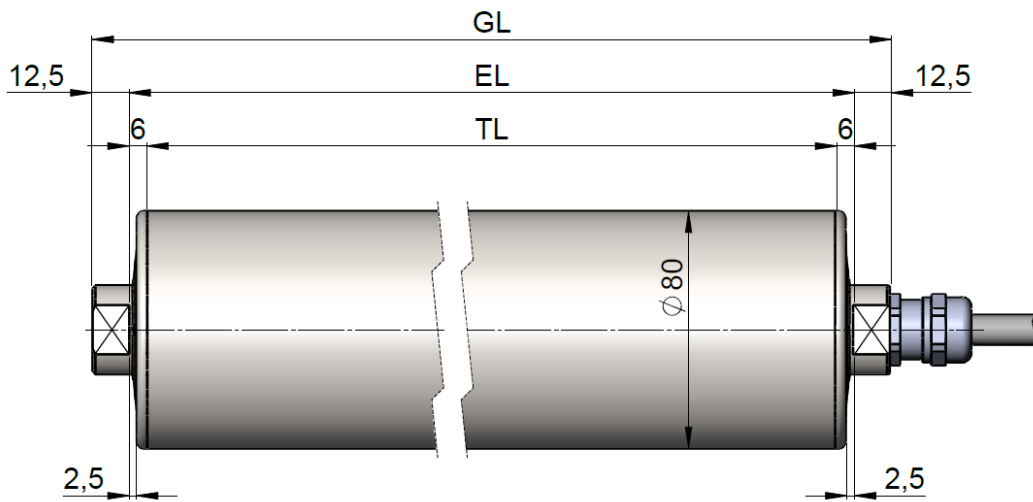
<b>440</b>	0 ... 0,34	44,0	55,0	1100	1375
	0 ... 0,48	33,8	55,0	845	1375
	0 ... 0,67	24,2	55,0	604	1375
	0 ... 0,84	19,3	52,0	483	1300
	0 ... 1,05	15,5	52,0	386	1300
	0 ... 1,40	11,6	44,2	290	1104
	0 ... 2,39	6,9	26,3	173	658
	0 ... 4,19	3,9	15,0	99	376

Power [W]	v [m/s]	M <sub>n</sub> [Nm]	M <sub>a</sub> [Nm]	F <sub>n</sub> [N]	F <sub>max</sub> [N]
770	0 ... 0,26	100,0	125,0	2500	3125
	0 ... 0,34	85,1	125,0	2128	3125
	0 ... 0,48	59,6	125,0	1489	3125
	0 ... 0,67	42,6	125,0	1064	3125
	0 ... 0,84	34,0	119,6	851	2990
	0 ... 1,05	27,2	95,7	681	2392
	0 ... 1,40	20,4	71,8	511	1794
	0 ... 2,39	12,2	42,8	304	1069

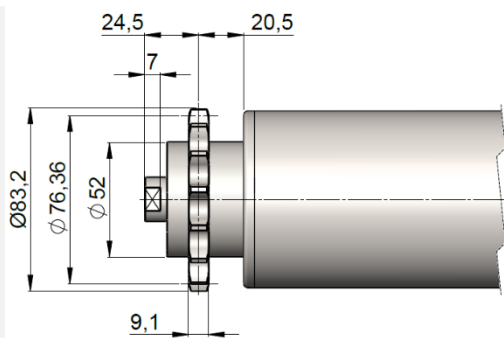
v speed  
 M<sub>n</sub> nominal torque  
 M<sub>a</sub> starting torque  
 F<sub>n</sub> nominal traction force  
 F<sub>max</sub> max. traction force



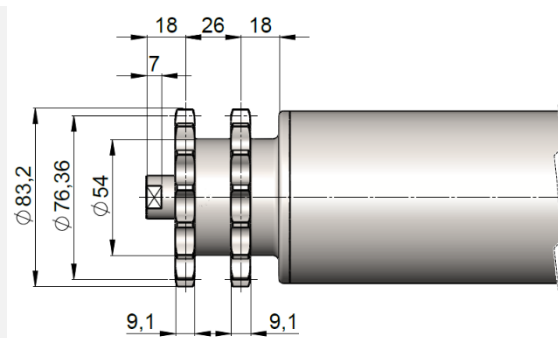
**Dimensions**



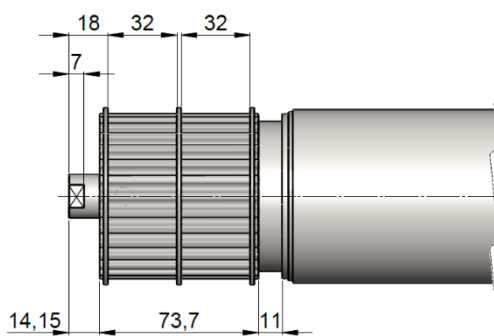
ILL.: STANDARD WITH FIXED AXLE



ILL.: SINGLE CHAIN WHEEL



ILL.: DOUBLE CHAIN WHEEL



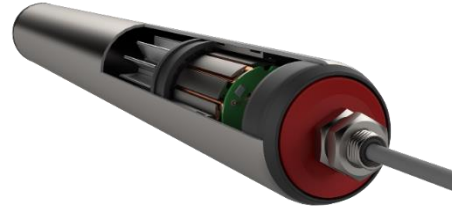
ILL.: TOOTHED BELT HEAD

- GL overall length
- EL clamping length
- TL tube length

## **„INNOVATION IS OUR DRIVE“**

### **MOTORIZED ROLLERS/DRUM MOTORS**

*Highest power density in relation to the support tube diameter.  
Suitable solutions for sorters, roller conveyors, lifting stations or chain conveyors.*



### **WHEEL HUB DRIVE**

*Whether differential or omnidirectional, individual drive solutions for shuttle or driverless transport systems up to 10m/s (36km/h) or more is possible.*



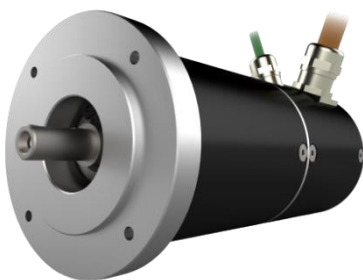
### **DRIVE CONTROLLER**

*Voltage range from 24/48VDC.  
Whether sensorless or with feedback system, an optimal control for the motors is guaranteed.*



### **SYNCHRONOUS MOTORS**

*Individual engine designs offer maximum flexibility for your application.  
Also available with attached gearbox.*



#### **HEADQUARTER AT**

Westbahnstraße 32  
4481 Ennsdorf  
Austria  
office@mta-innovation.com  
+43 720 920 500

[www.mta-innovation.com](http://www.mta-innovation.com)

#### **SALES OFFICE DE**

Neumeyerstraße 22-26  
90411 Nürnberg  
Germany  
office.de@mta-innovation.com  
+49 911 951 513 99